

To view transferred data according to applications, enter the Internet bandwidth monitor in the section *Presentation and Evaluation* -> *Presentation* -> *Internet bandwidth monitor*, select the customer, for whom you want to display the overview, using the upper filter. In the left part, you'll see the whole network topology including all specific devices. If you want to view the overview of transferred data according to applications for a specific PC, then click on this PC in the topology on the left side, which will automatically open a new window, in which there's a tab Details of PC transfer, in which you can click on the link to view *Overview of processes*, as you can see on the next image.

The screenshot shows the 'Internet Bandwidth' section of the Customer Monitor interface. The left sidebar has 'Internet bandwidth monitor' highlighted. The main area shows a table of processes with columns: Proces, Total, Download, Upload, Port #, Download/Upload. A red box highlights the 'Proces' column. A red arrow points to an 'Export to Excel' button in the top right corner.

Proces	Total	Download	Upload	Port #	Download/Upload
firefox.exe	837.23 MB	790.24 MB	47.00 MB	8000:	458.17 MB / 14.02 MB
chrome.exe	156.82 MB	140.31 MB	16.51 MB	80:	121.08 MB / 13.58 MB
Monitor.exe	94.25 MB	83.25 MB	11.00 MB	110:	75.39 MB / 3.90 MB
skype.exe	12.27 MB	11.50 MB	795.18 KB	80:	11.31 MB / 724.24 KB
svchost.exe	1.57 MB	801.76 KB	808.82 KB	777:	404.00 KB / 453.29 KB
Unknwn	371.75 KB	252.83 KB	88.93 KB	80:	278.05 KB / 82.56 KB
GoogleUpdate.exe	136.08 KB	81.37 KB	55.71 KB	80:	81.37 KB / 54.71 KB
DiscComs.exe	2.94 KB	1.58 KB	1.36 KB	udg:	1.05 KB / 1.35 KB
Unknown	81.08 MB	78.24 MB	4.84 MB		
TOTAL	1.16 GB	1.08 GB	81.16 MB		

Image: Zobrazenie rozpisu prenesených dát podľa aplikácií

This overview can also be exported into Excel, the export is illustrated on the next image.

NAWPC04 - Prenos dát procesov rozdelený na TCP porty a ostatné protokoly, 03.09.2012 14:15:37 - 06.09.2012 14:45:37										
Prenos cez procesy										
Proces	Total (kB)	Download (kB)	Upload (kB)	Port #	Download/Upload (kB)					
firefox.exe	857 326.63	809 201.39	48 125.24	8000	80.00	443.00	81.00	1.33	udp	
chrome.exe	160 584.22	143 677.08	16 907.14	80	80.00	443.00	6 605.30	5 222.00	110.31	udp
Monitor.exe	96 515.75	85 248.69	11 267.06	110	80.00	6 484.73	1 504.15	2 525.00	56.85	udp
ekrn.exe	12 568.46	11 775.28	793.19	80	443.00	193.90	0.00	0.00		
svchost.exe	1 711.63	801.78	909.85	???	404.00	443.00	238.16	80.00	159.63	udp
Unknown	371.75	282.83	88.93	80	278.05	443.00	4.69	0.09	0.09	
GoogleUpdate.exe	138.08	81.37	56.71	80	81.37	udp	0.00	0.00		
Desccns.exe	2.64	1.05	1.58	udp	1.05	1.58				

Prenos cez IP adresy										
IP adresa	Total (kB)	Download (kB)	Upload (kB)	Port #	Download/Upload (kB)					
93.184.69.143 (mail.jemnemelov)	484 378.13	469 573.60	14 804.53	8000	80.00	411.34	447.59	icmp	0.00	0.00
92.240.251.49 (seamail.seal.sk)	81 279.50	77 202.61	4 076.88	110	4 076.88	icmp	0.00	0.00	0.00	0.00
213.81.185.52 (img.topky.sk)	61 249.47	58 212.34	3 037.13	80	3 037.13	icmp	0.00	0.00	0.00	0.00
5.9.40.213 (static.213.40.9.5.cfe)	27 055.81	26 089.78	966.03	80	946.03	icmp	0.00	0.00	0.00	0.00
81.95.98.17 (gds36b.active24.cz)	20 960.41	20 311.37	649.04	80	649.04	icmp	0.00	0.00	0.00	0.00
62.168.125.34	16 327.11	16 015.18	311.93	80	311.93	icmp	0.00	0.00	0.00	0.00
217.67.17.133 (sm.seal.sk)	15 449.32	7 468.29	7 981.03	80	7 407.24	7 163.46	2525	61.05	817.57	icmp
46.229.225.193 (46.229.225.193)	12 775.48	12 245.07	530.41	80	530.41	icmp	0.00	0.00	0.00	0.00

Image: Export prenesených dát podľa aplikácií do excelu

In the tab Transferred data, you can view percentage contribution of particular processes to the transferred data, as displayed on the following image.

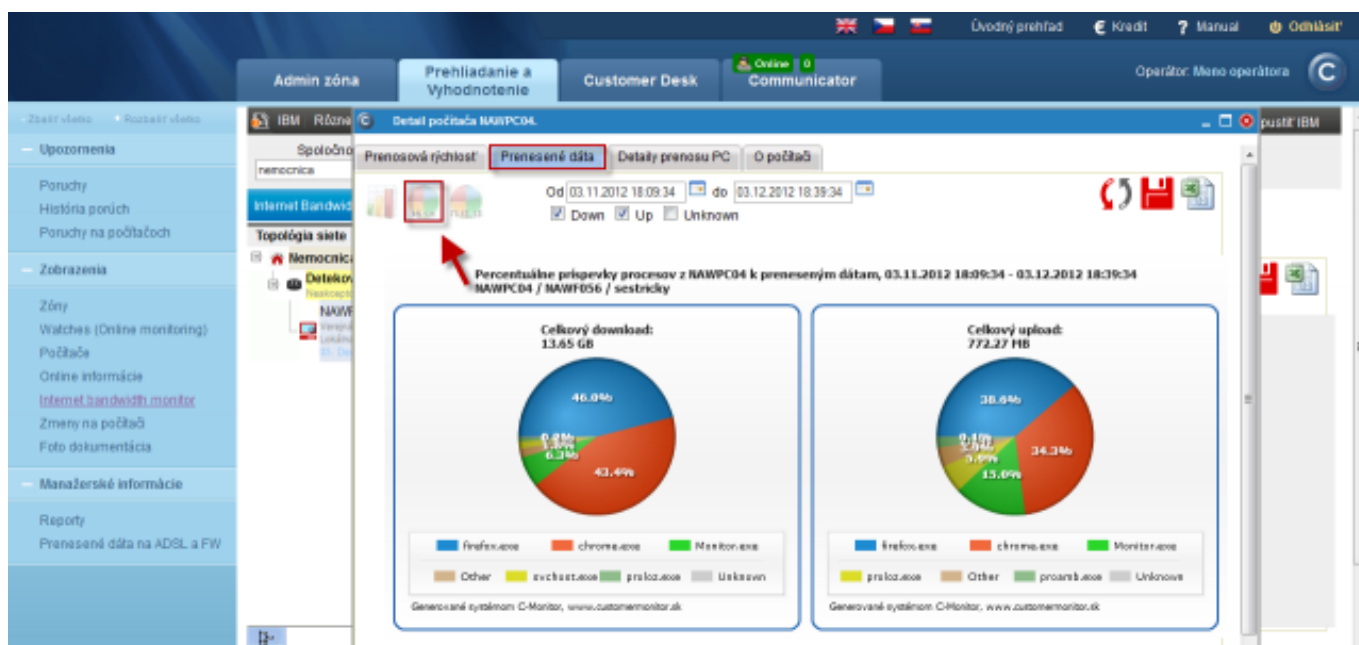


Image: Percentuálne príspevky procesov k preneseným dátam - zobrazené na grafe

This graph can also be exported into Excel, the export is displayed on the next image. In the export, there's total upload and download of each process written under the graph.

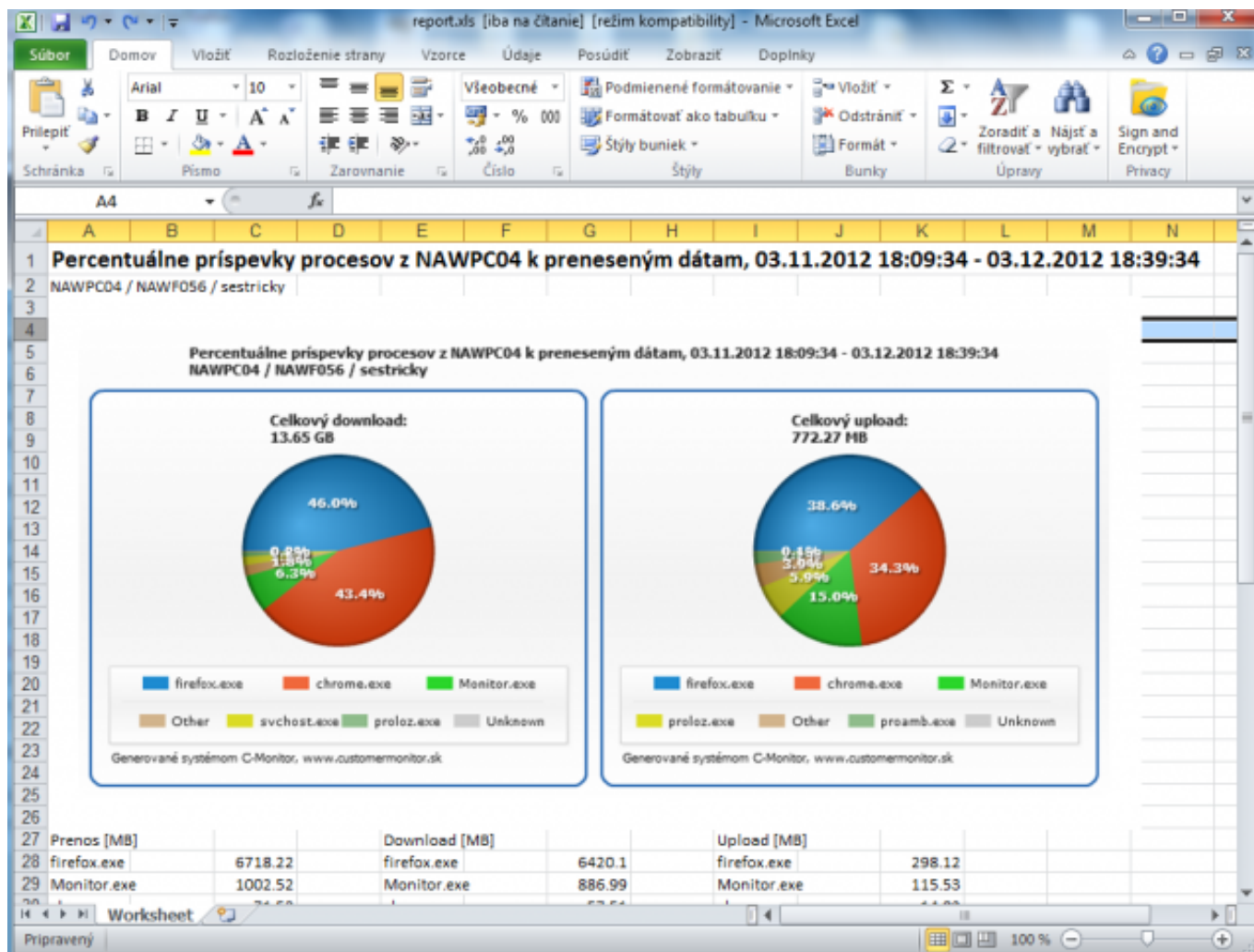


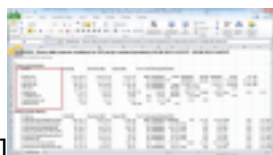
Image: Percentuálne príspevky procesov k preneseným dátam - export do .xls

Date:

03/03/2012



[1]



[2]



[3]



[4]

Links

[1] <https://customermonitor.eu/sites/default/files/Rozpis%20podla%20aplikacii%201.png>

[2] <https://customermonitor.eu/sites/default/files/Rozpis%20podla%20aplikacii%202.png>

[3] <https://customermonitor.eu/sites/default/files/kolacovy%20graf%20prispevky.png>

[4] <https://customermonitor.eu/sites/default/files/export%20xls%20kolacik.png>