

ESX plugin is functional since the version VMware ESX 5.0, to set a watch for monitoring of vmware ESX servers through ESX plugin, you must know the ESX server's IP address and you need to have a valid login and password. For correct function, you must enable ILO on the server, and set a valid IP address to it.

After fulfilling the basic conditions and setup, move to Scheduler where you'll configure the monitoring. Press the button *add Watch* using the wizard as shown on the next image and enter name of the Watch.

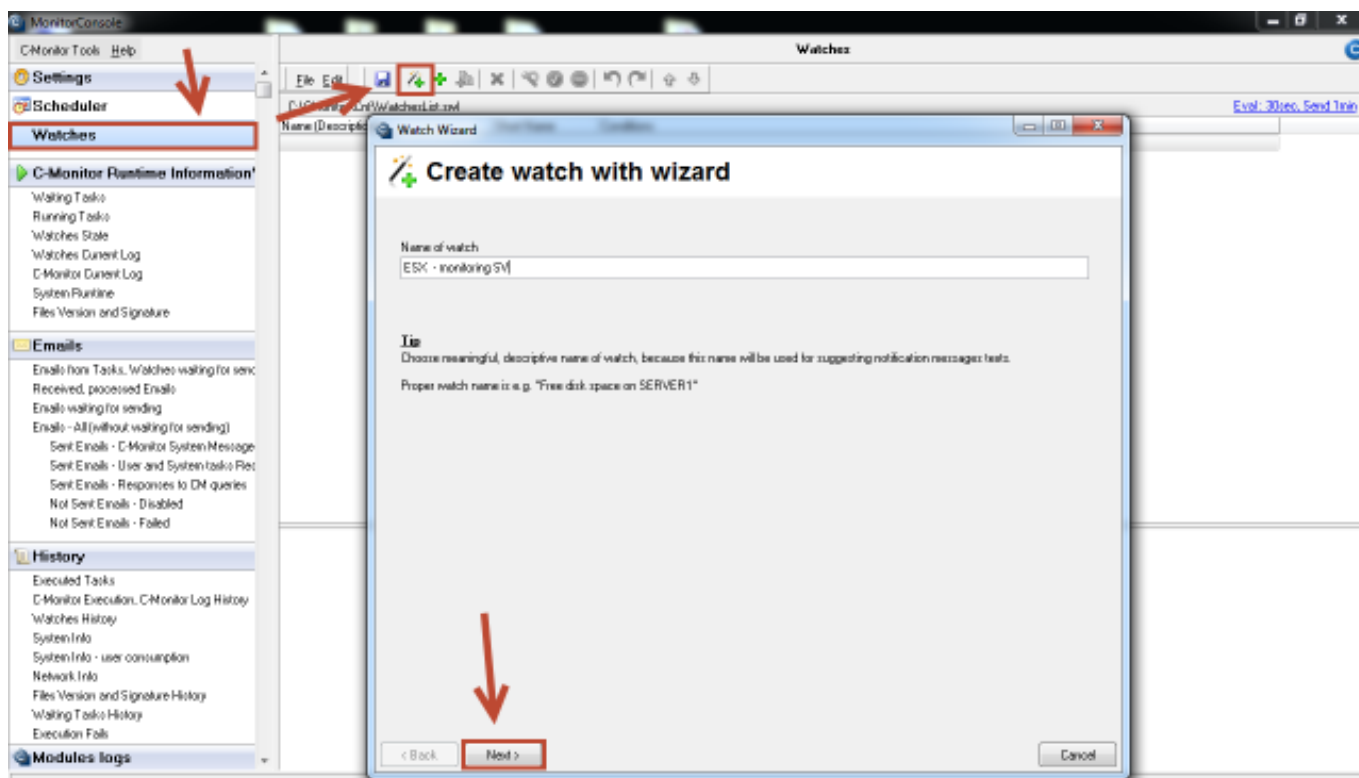


Image: Vytvorenie watchu pre monitoring ESX servera

Subsequently, select from the item *Preddefined health templates* a template called *VMware ESX health plugin*, as displayed on the next image.

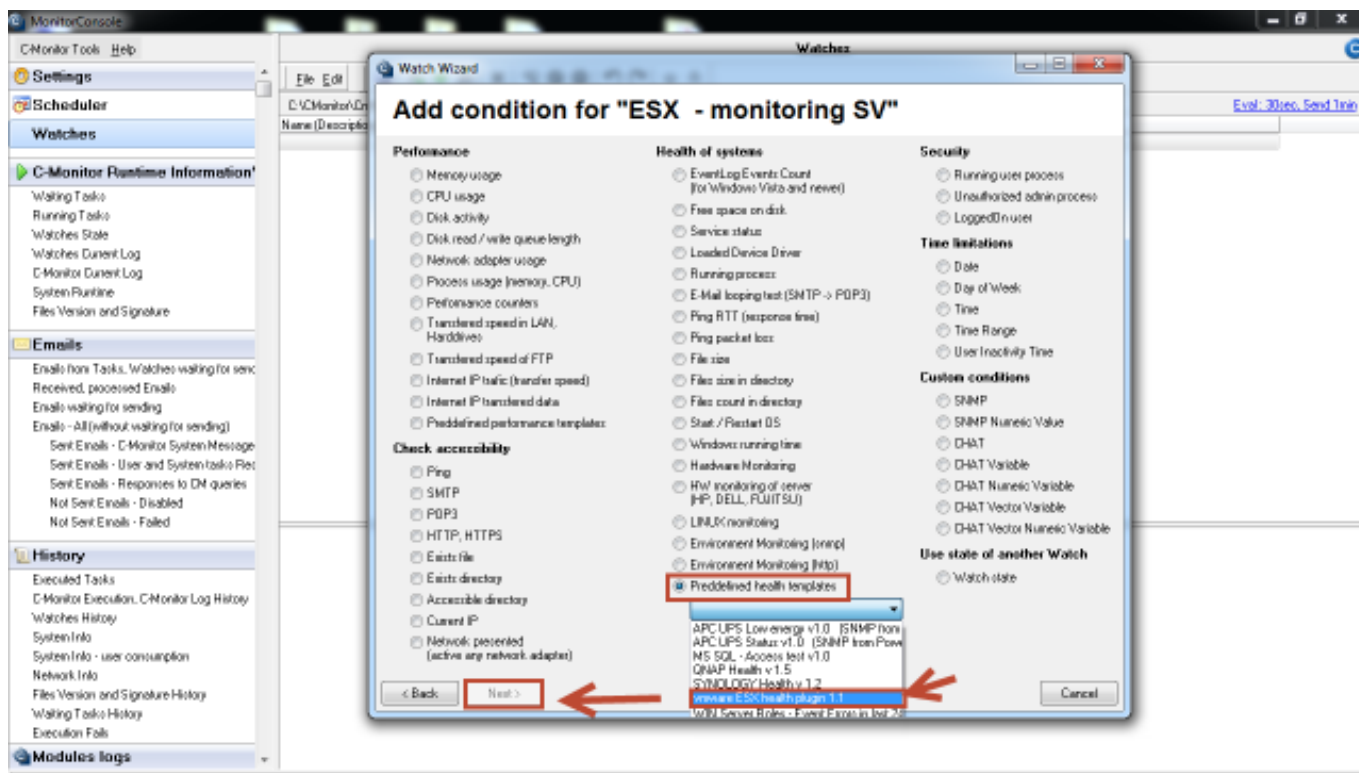


Image: Vyber preddefinovanej šablóny pre ESX plugin

In the next window, enter IP address and login data to the ESX server, then press the button *Test Edit Script*, by which you'll test function of communication between the ESX server and C-Monitor client.

**Watch Wizard**

### vmware ESX health plugin 1.1

Script Name  
vmware ESX health plugin 1.1]

Script

Parameter	Value
ESX(i)/vCenter server IP	192.168.1.1
ESX(i)/vCenter server user	root
ESX(i)/vCenter server pass	
Check hosts 'yellow' states	<input checked="" type="checkbox"/>
Check hosts 'red' states	<input checked="" type="checkbox"/>
Check health 'Fan'	<input checked="" type="checkbox"/>
Check health 'Other'	<input checked="" type="checkbox"/>
Check health 'Processors'	<input checked="" type="checkbox"/>
Check health 'Software Components'	<input checked="" type="checkbox"/>

Operation: Successful Test Period: 5 Unit: min

Value from this condition send to CM server  
☒ Always  
☐ Never

☐ Assess the state of watch

< Back Next > Cancel

**Test, Edit Script**

Image: Nastavenie IP adresy a prihlasovacích údajov do ESX servera + otestovanie funkčnosti

To launch the script, press the green arrow.

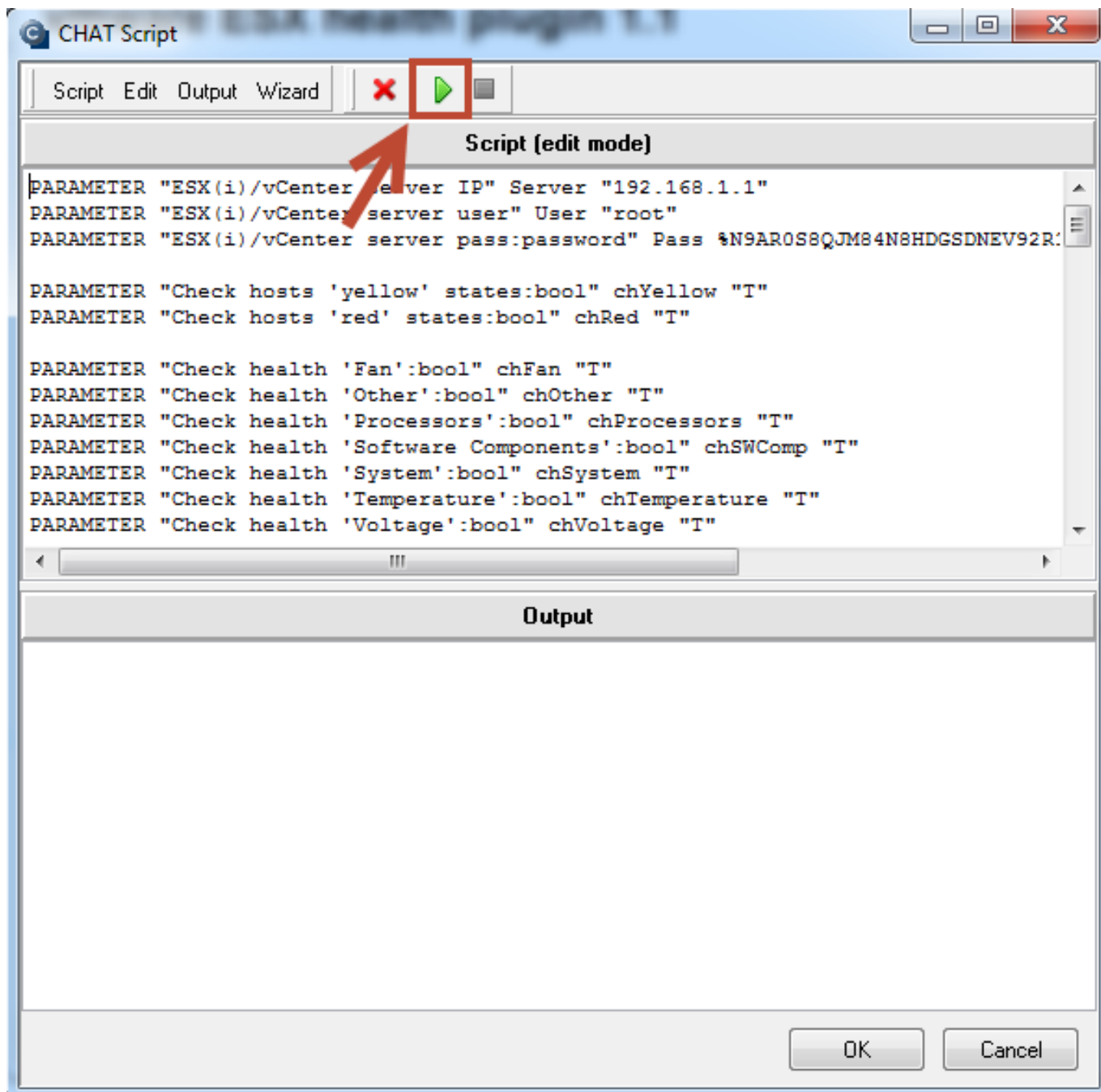


Image: Spustenie skriptu pre otestovanie funkčnosti vyhodnocovania parametrov ESX servera

Before the execution, you'll be prompted to sign the ESX plugin, a successful creation of the signature is displayed on the following image.

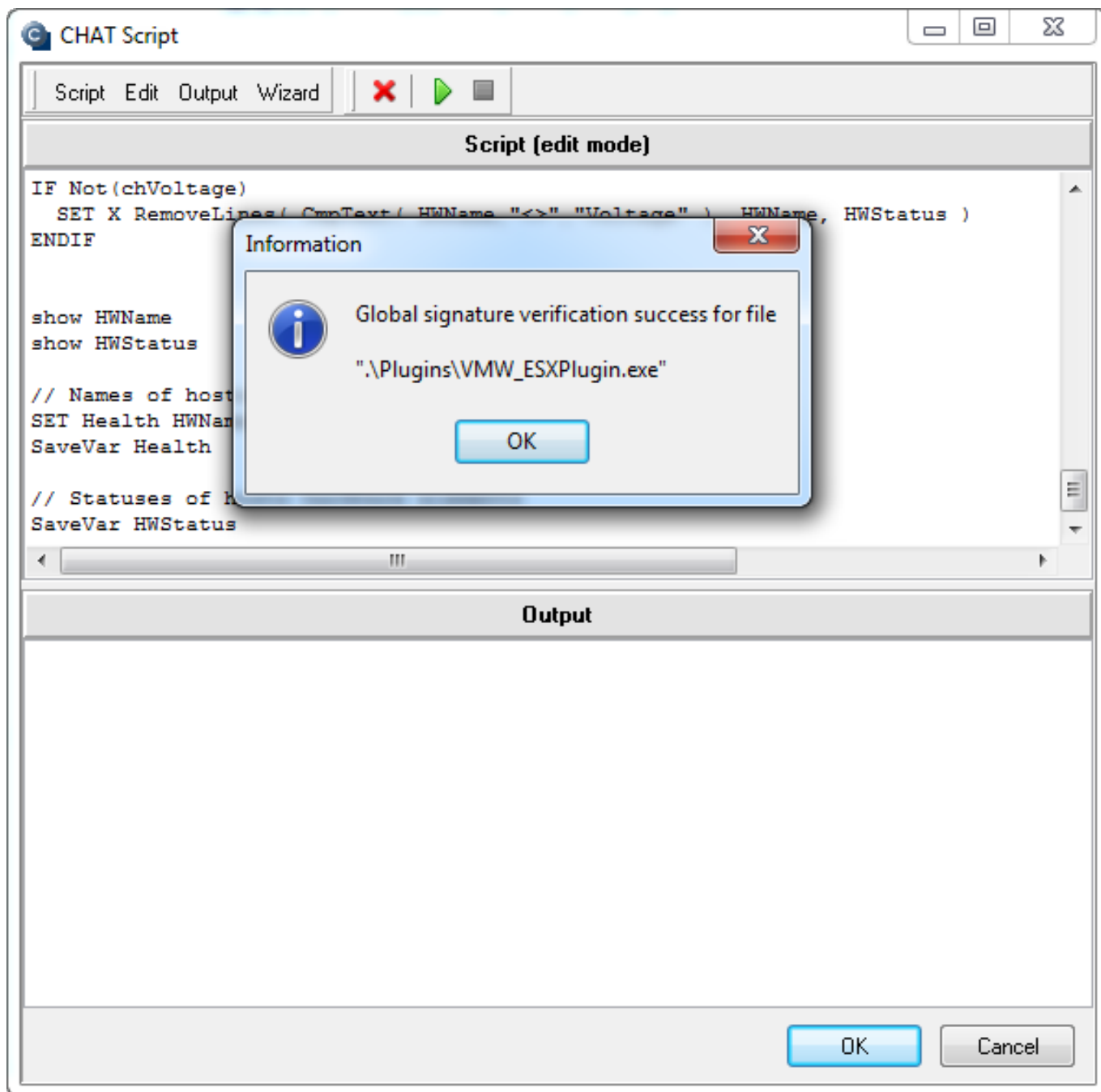


Image: Podpísanie spúšťačieho súboru pre ESX plugin

When the connection is successfully tested, press *Next*. In the next window you'll see a list of parameters, which the ESX plugin evaluates on ESX servers.

**Conditions for "ESX - monitoring SV"**

1	Successful CHAT vmware ESX health plugin 1.1 Check every 5min Each value will be sent to CM Server
2	CHAT Var. "Product" (Product) <> . Check on each watch state evaluation Each value will be sent to CM Server
3	CHAT Vect.Var. "Status[]" (HostStatus) = green Check on each watch state evaluation Each value will be sent to CM Server
4	CHAT Vect.Var. "Model[]" (HostHw) <> . Check on each watch state evaluation Each value will be sent to CM Server
5	CHAT Vect.Var. "Red[]" (HostRed) = none Check on each watch state evaluation Each value will be sent to CM Server
6	CHAT Vect.Var. "Yellow[]" (HostYellow) = none Check on each watch state evaluation Each value will be sent to CM Server
7	CHAT Vect.Var. "Upkeep[]" (HostStatus) = green

Add Condition Edit Condition Delete Condition

State of watch is **OK** if all conditions are true **FAIL** - if at least one condition is false

☐ Delay for FAIL state. (Useful for suppressing short term FAIL state)

Hide Advanced Options

☒ If state of the watch is UNKNOWN, notify this by options in actions

☐ Evaluate watch state with longer period than 50s (C-Monitor Tick interval)

**Note:** Watches are active from 5 minutes after the operating system start

< Back **Next >** Skip Actions >> Cancel

Image: Zoznam parametrov, ktoré sa budú vyhodnocovať

In the next step, set actions that should be executed, in case the Watch is switched to Fail state.

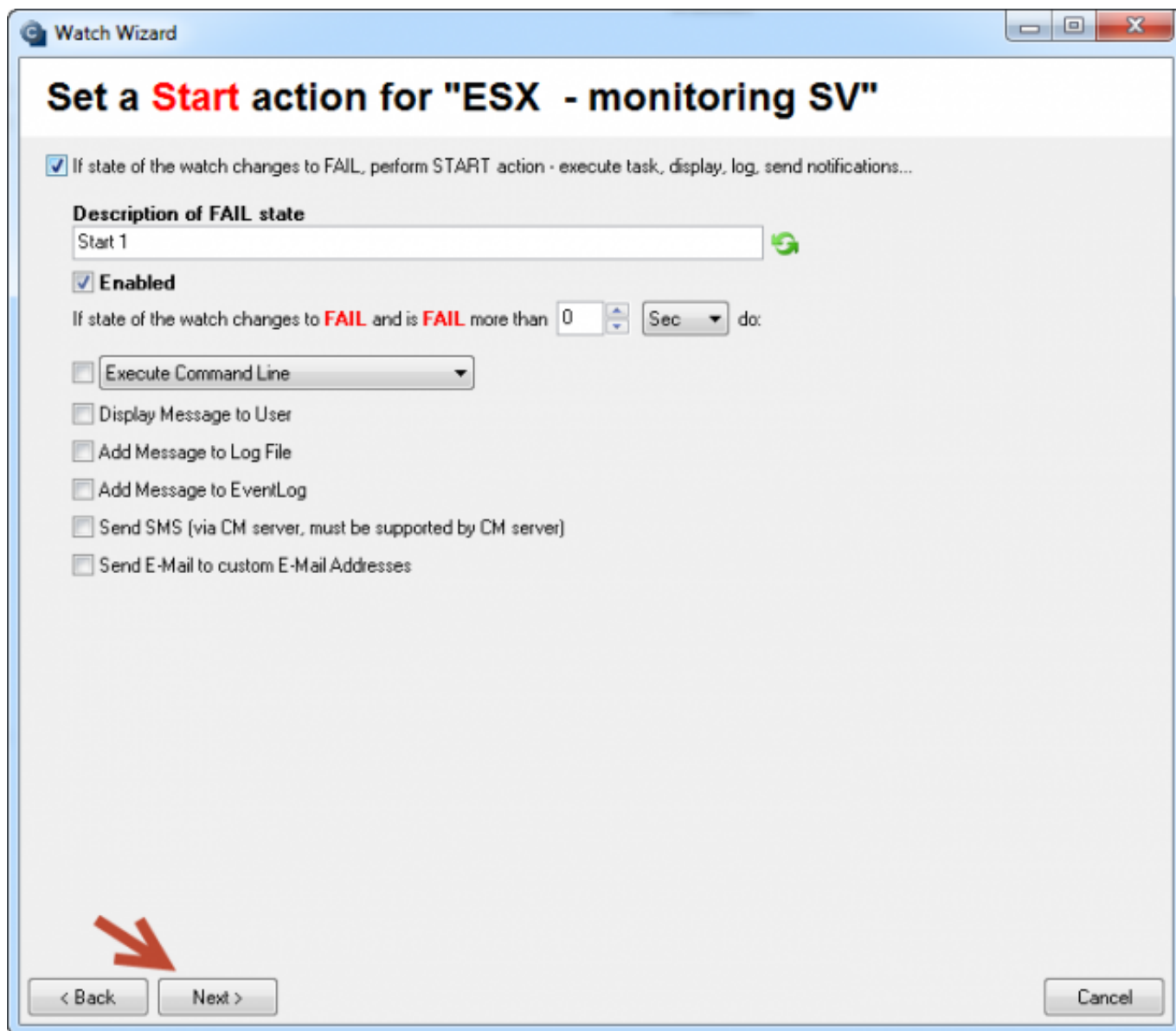


Image: Nastavenie akcií v prípade prechodu watchu do stavu fail

After passing through the whole wizard, press *Save*, as you can see on the next image.

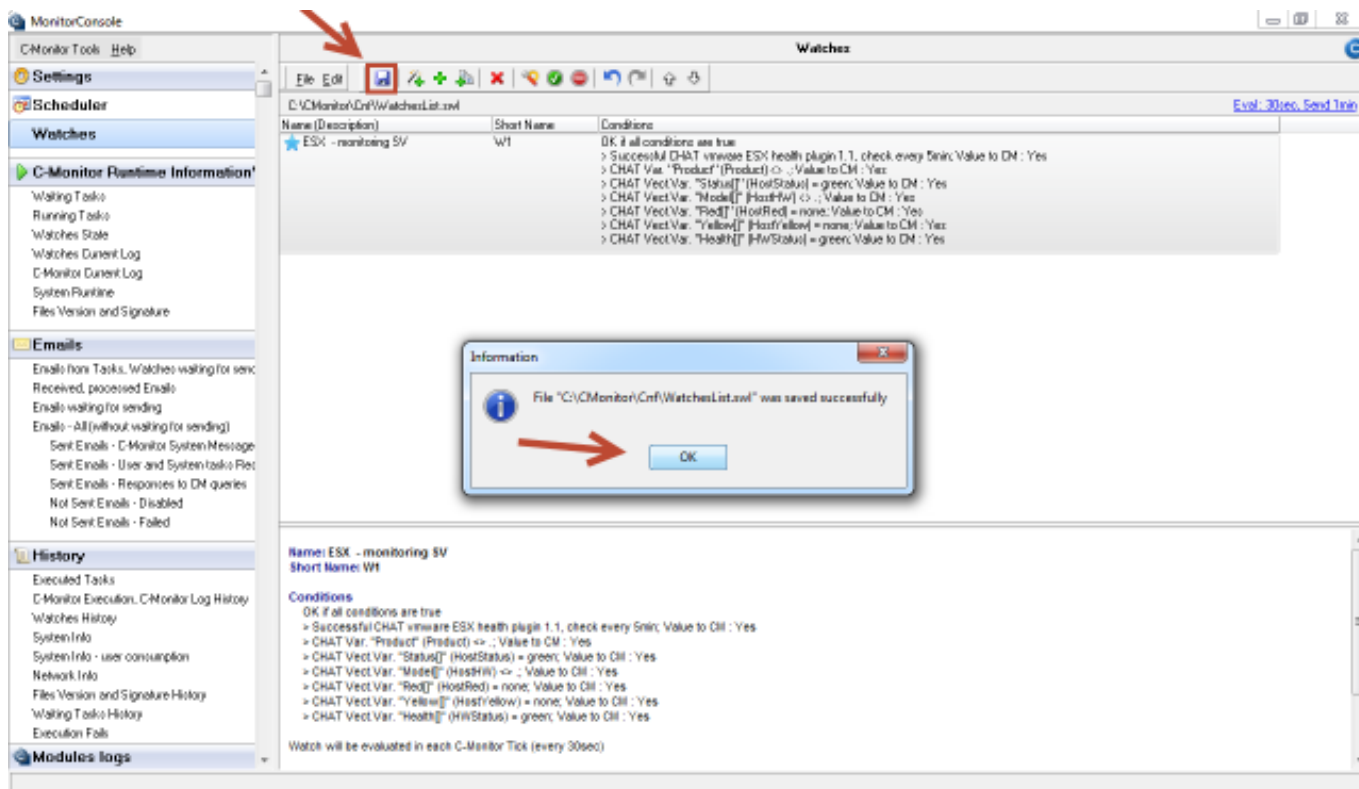


Image: Uloženie nastavení watchu

The current state of the Watch can be viewed through C-Monitor client in the section *Watch state*, as is shown on the next image.

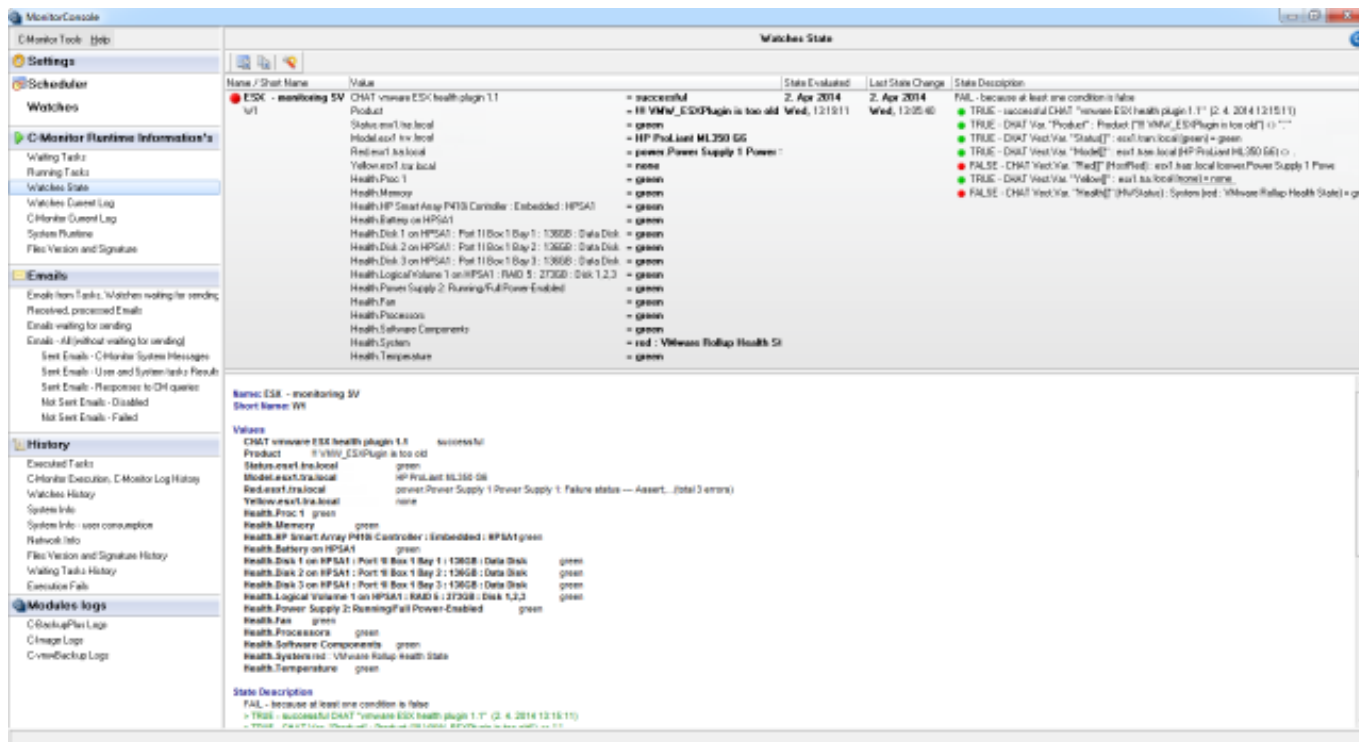


Image: Zobrazenie aktuálneho stavu watchu cez C-Monitor klienta

The Watch's state can be viewed also on CM portal, in the section *Presentation and Evaluation* -> *Presentation* -> *Watches (online monitoring)*.



**Watches (Online monitoring)**

Spoločnosť:  Počet & Umiestnenie:  Zoradiť podľa: CM-ID Zoradiť Watches podľa: Rozvrhu Zoradiť Watches ako: Vozbuje

Meno Watcha:  Current status:  Zoradiť ako: Vozbuje Zoradiť Watches ako: Vozbuje

Operator:  Zobrazit: Pod sebou ☐ True ☒ False ☒ Unknown ☐ Vymažte watche ☐ Len online PC

**Zoznam watches [zobrazení 1 položka]**

Stav	Meno	Hodnota	Posledná zmena stavu	Podmienky k určenia stavu	CM ID počítača	Meno počítača v sieti	Umiestnenie	Posl. online spojenie s CM
OK	ESX RA server plugin 1.1	CHAT ESX health over plugin 5.1 successful Product VMware ESX 5.0 build-489512 Status.esx1.kb.local green Model.esx1.kb.local HP ProLiant DL380 G7 Red.esx1.kb.local none Yellow.esx1.kb.local none Health.Pric.1 green Health.Pric.2 green Health.Memory green Health.Power Supply 1: Running/Full Power-Enabled green Health.Power Supply 2: Running/Full Power-Enabled green Health.Fan green Health.Memory green Health.Processors green Health.Software Components green Health.Systems green Health.Temperature green	17. Mar 2014 16:25:30	OK - because all conditions are true TRUE - successful CHAT ESX health over plugin 1.1" (3. 4. 2014 6:25:30) TRUE - CHAT Var. "Product" "Product" ("VMware ESX 5.0 build-489512") == "VMware ESX 5.0 build-489512" TRUE - CHAT Vaci Var. "Status": must.kb.local (green) = green TRUE - CHAT Vaci Var. "Model": must.kb.local (HP ProLiant DL380 G7) == "HP ProLiant DL380 G7" TRUE - CHAT Vaci Var. "Red": must.kb.local (none) = none TRUE - CHAT Vaci Var. "Yellow": must.kb.local (none) = none TRUE - CHAT Vaci Var. "Health": Pric.1 (green), Pric.2 (green), Memory (green), Power Supply 1: Running/Full Power-Enabled (green), Power Supply 2: Running/Full Power-Enabled (green), Fan (green), Memory (green), Processors (green), Software Components (green), System (green), Temperature (green) = green	8307V05	8307V05.R05	85 - Senecovka, Backup	3. Apr 2014 11:25:48

Image: Zobrazenie stavu ESX servera prostredníctvom CM portálu

Date:

02/17/2014