

The most burdening processes of CPU and RAM can be displayed in many places.

View of the most burdening processes of CPU, RAM in the section Online information

In the section *Presentation and Evaluation* -> *Presentation* -> *Online information* is displayed the current status and there are given two processes that load CPU and RAM the most among the highlighted lines with CPU and Memory processes, as shown on the next image. Based on this information, you can always tell, which processes are currently the most burdening for the device.

Zóny

Online Informácie

System usage	Cpu system usage	19 %
Cpu kernel usage	4 %	
Memory usage	64 %	
Disk activity	35 %	
Disk avg read queue	0	
Disk avg write queue	0	
Processes by cpu	Process 1	firefox.exe (5 %)
	Process 2	C:\win\inet\Sys\O\W\I4\Macromed\Flash\FlashPlayerPlugin_11_5_802_146.exe (4 %)
Processes by memory	Process 1	firefox.exe (128 MB)
	Process 2	OUTLOOK.EXE (141 MB)
Ping connection monitoring	Description	www.google.sk (12x in 3m)
	Packet loss	10 %
	Round trip time	217 ms

Image: Online info na CM portáli - aktuálny stav a zvýraznenie riadkov s CPU, Memory procesmi

An example from table history of Online info and framing the columns with TOP processes.

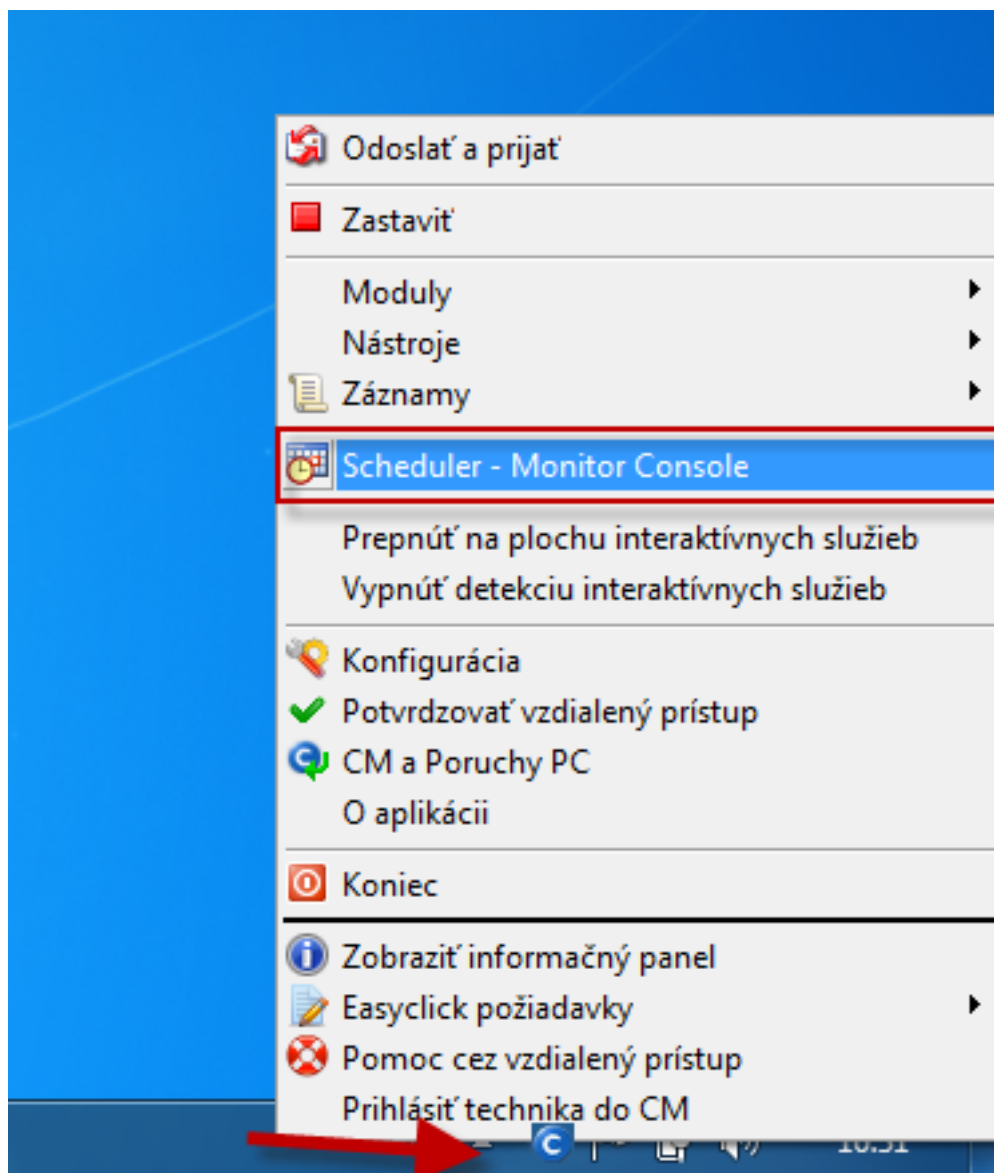
The screenshot shows the Mikrotik WinBox interface. The top navigation bar includes 'Admin zóna', 'Prehľadanie a Vyhodnotenie', 'Customer Desk', and 'Communicator'. The left sidebar lists various menu items like 'Začiatkovo', 'Počítačovo', 'Upozornenia', 'Poruchy', 'História porúch', 'Poruchy na počítačoch', 'Zobrazenia', 'Zóny', 'Watches (Online monitoring)', 'Počítače', 'Online informácie', 'Internet bandwidth monitor', 'Zmeny na počítačoch', 'Foto dokumentácia', 'Manažerské informácie', 'Reporty', and 'Prenášané dáta na ADSL a FW'. The main content area is titled 'Zóny' and contains a search bar, filters for 'Spoločnosť', 'Operátor', and 'OS', and a table of online zone information. A red arrow points to the 'História' link in the 'Show' row of the table. A red callout box contains the text: 'Vstup do zobrazenia histórie z online informácií v tabuľkovej alebo grafickej forme'.

Zóna Online informácie [zobrazená 1 položka]

Sekcia	Parameter	Value
	show	show
	Network Name	JURAJ-HP
	User	Juraj
	Current Login	Juraj-HPJuraj
	Location	Topolova
	Phone	
	Online connection	23. Jan 2013 15:40:03
	Remote Access	
	Global ip	155.121.155.155
	Computer uptime	0 days 05:30:00
Logged users	User 1	Juraj-HPJuraj - ADMINISTRATOR
System usage	Cpu system usage	5 %
	Cpu kernel usage	1 %

Image: Zobrazenie vstupu do histórie online informácií

The history is shown max 24 hours ago.



In the left menu click on the section System info, which will load a list of all processes that load CPU and RAM, with more detailed information about the specific processes. Description of the individual parts of this section, and more information can be found at [System info](#) [1].

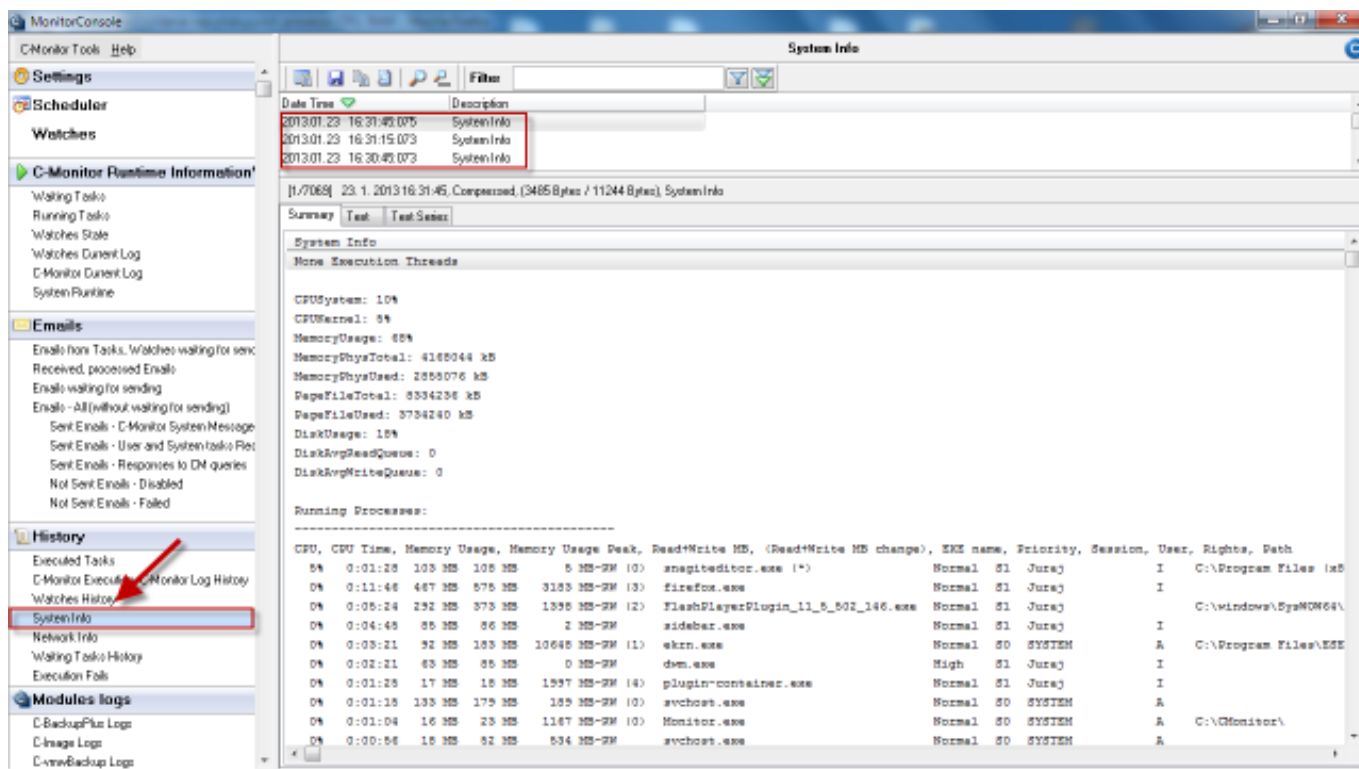


Image: Zobrazenie System info v C-Monitor Windows klientovi

Evaluation and graph of course of the computer's load can be in C-Monitor scheduler also displayed in the section *System Runtime* as shown on the following image. The graph is interactive, which means that if you click anywhere on the graph, you'll see the values of system information that were measured at the time.

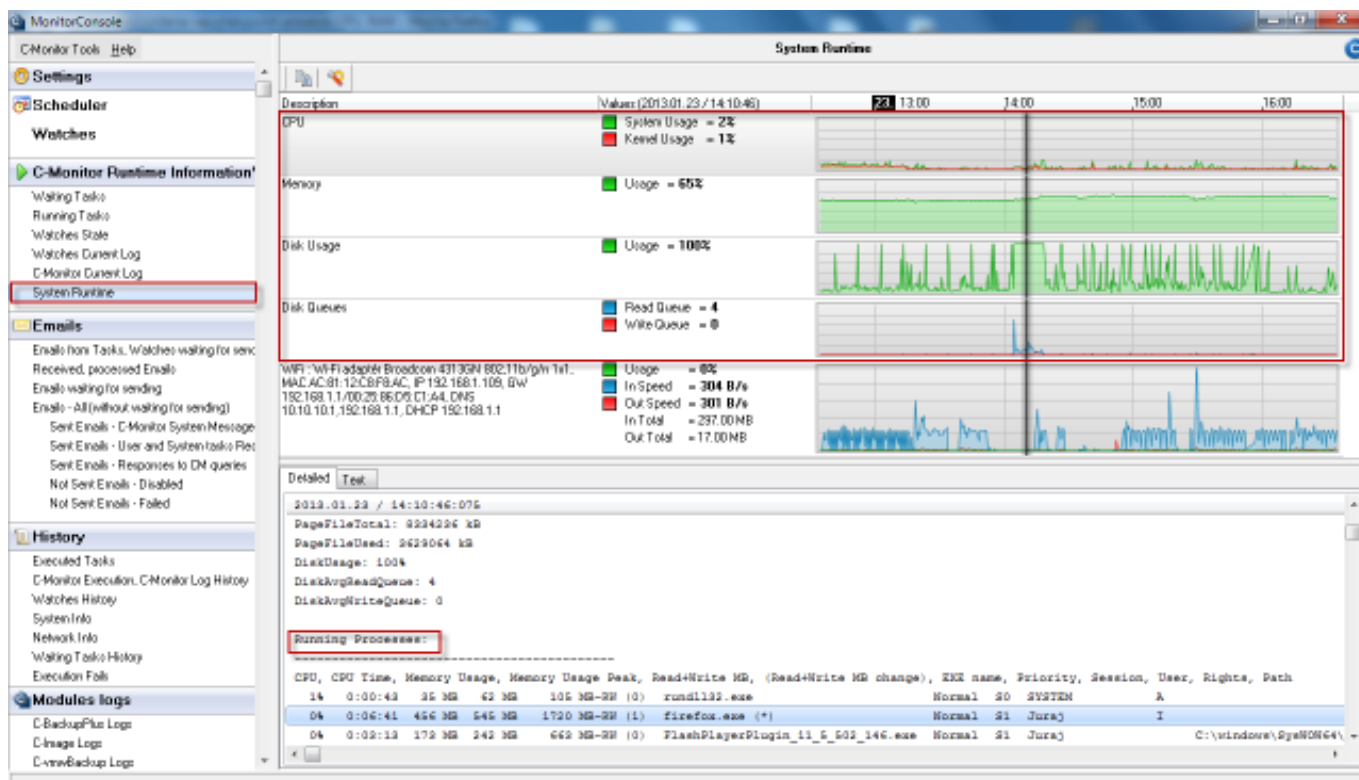


Image: Zobrazenie System Runtime v C-Monitor Windows klientovi

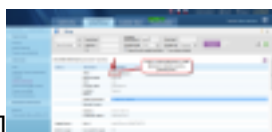
Date:

12/30/2012 External Links:

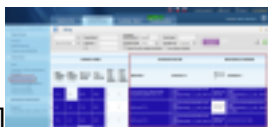
[System info](#) [2] [Online informácie](#) [3] Images:



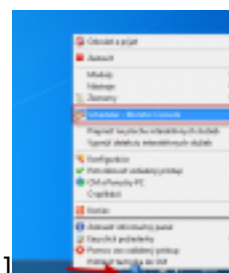
[4]



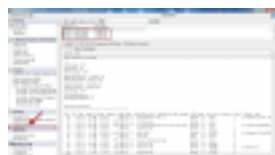
[5]



[6]



[7]



[8]



[9]

Links

[1] <https://customermonitor.eu/how-cm-works-0/components-and-architecture-cm/c-monitor-windows-client/c-monitorconsole/system-info>

[2] <https://customermonitor.eu/node/793>

[3] <https://customermonitor.eu/node/489>

[4] <https://customermonitor.eu/sites/default/files/online%20info%20-%20zatazenie%20%2Btop%20procesy.png>

[5] <https://customermonitor.eu/sites/default/files/vstup%20do%20historie.png>

[6] <https://customermonitor.eu/sites/default/files/zobrazenie%20najvytazujucej%20procesov%20v%20tabulkovej%20forme.png>

[7] https://customermonitor.eu/sites/default/files/vstup%20do%20schedulera_1.png

[8] https://customermonitor.eu/sites/default/files/system%20info_1.png

[9] https://customermonitor.eu/sites/default/files/system%20runtime_0_0.png