

Network info

Network info offers detailed information about transferred data, which are counted every day anew. The transferred data are divided according to direction (upload, download), they're assigned to processes, with a particular IP address, and there are also displayed corresponding transfer ports to the transfers. Such detailed information cannot be found anywhere on CM Portal.

Entry to Network info is realized through C-Monitor tray icon. Open **Scheduler - Monitor Console** and in the new window select *Network info* from the options on the left, as displayed on the next image.

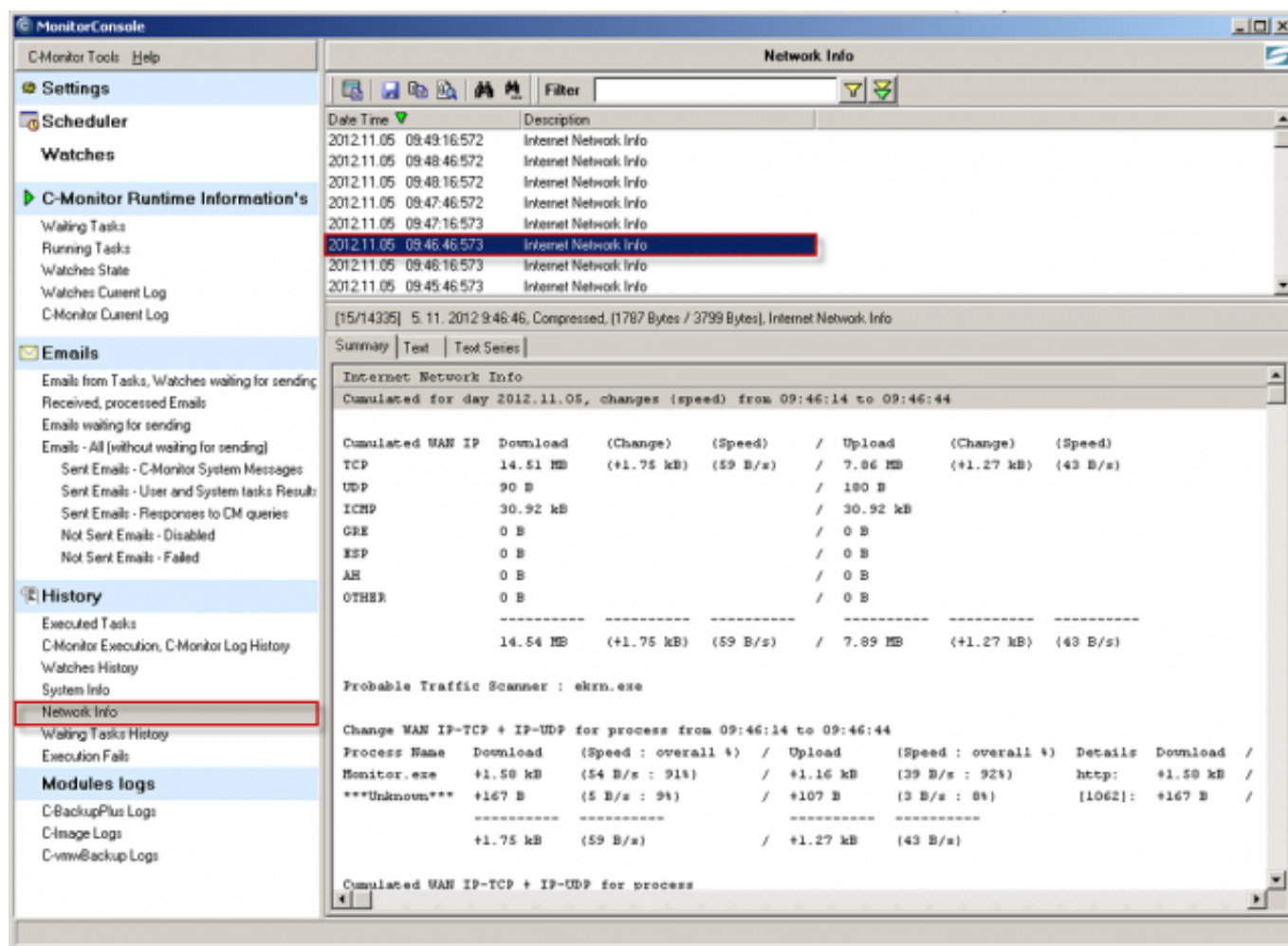


Image: Network info

The output is divided to five parts.

The first part shows cumulated amount of transferred data through individual protocols, counted from 00:00 till 24:00 of the current day. In the column *Change* are displayed changes for the past 30 seconds of received (download) and sent (upload) data, and in the column *Speed* is the average transfer speed. This section is highlighted on the next image.

The screenshot shows the 'MonitorConsole' interface with the 'Network Info' window open. The left sidebar contains various navigation options like Settings, Scheduler, Watches, C-Monitor Runtime Information's, Emails, History, and Modules logs. The main window displays a list of network events and a detailed summary of cumulative network statistics for the day 2012.12.13, from 11:39:51 to 11:40:21.

Internet Network Info
Cumulated for day 2012.12.13, changes (speed) from 11:39:51 to 11:40:21

	Cumulated WAN IP	Download	(Change)	(Speed)	/	Upload	(Change)	(Speed)
TCP	89.13 MB	(+978 B)	(32 B/s)	/	117.56 MB	(+703 B)	(23 B/s)	
UDP	90 B			/	546 B			
ICMP	37.08 kB			/	37.08 kB			
GRE	0 B			/	0 B			
ESP	0 B			/	0 B			
AH	0 B			/	0 B			
OTHER	0 B			/	0 B			
Total	89.16 MB	(+978 B)	(32 B/s)	/	117.60 MB	(+703 B)	(23 B/s)	

Probable Traffic Scanner : akrm.exe

Change WAN IP-TCP + IP-UDP for process from 11:39:51 to 11:40:21

Process Name	Download	(Speed : overall %)	/	Upload	(Speed : overall %)	Details	Download	/	Upload
Monitor.exe	+811 B	(27 B/s : 83%)	/	+596 B	(19 B/s : 85%)	http:	+811 B	/	+596 B
Unknown	+167 B	(5 B/s : 17%)	/	+107 B	(3 B/s : 15%)	[1066]:	+167 B	/	+107 B
Total	+978 B	(32 B/s)	/	+703 B	(23 B/s)				

Cumulated WAN IP-TCP + IP-UDP for process

Process Name	Download	(overall %)	/	Upload	(overall %)	Details	Download	/	Upload
Unknown	79.54 MB	(83%)	/	113.98 MB	(97%)	[49577]:	69.33 MB	/	90.29 MB
Total	79.54 MB	(83%)	/	113.98 MB	(97%)				

Image: Kumulovaný počet celkových prenesených dát cez jednotlivé protokoly

The second part shows the change of sent and received data for just TCP and UDP packets, for a concrete process for the past 30 seconds, with detail of transfer speed and transfer port.

The third part shows the same as the second one, but cumulative for the whole day (00:00 - 24:00).

The second and the third part are both highlighted on the next image.

The screenshot shows the 'MonitorConsole' interface with the 'Network Info' window open. The left sidebar contains navigation options like Settings, Scheduler, Watches, C-Monitor Runtime Information's, Emails, History, and Modules logs. The main window displays a list of network events with columns for Date Time and Description. Below this, a detailed view for 'Internet Network Info' is shown, including a summary of traffic for 'Monitor.exe' and a cumulative WAN IP-TCP + IP-UDP for process table.

Network Info Summary:

[3/13396] 13.12.2012 11:40:24, Compressed, [1910 Bytes / 3817 Bytes], Internet Network Info

Internet Network Info

Probable Traffic Scanner : skrm.exe

Change WAN IP-TCP + IP-UDP for process from 11:39:51 to 11:40:21

Process Name	Download	(Speed : overall %)	/	Upload	(Speed : overall %)	Details	Download	/	Upload
Monitor.exe	+811 B	(27 B/s : 83%)	/	+596 B	(19 B/s : 85%)	http:	+811 B	/	+596 B
Unknown	+167 B	(5 B/s : 17%)	/	+107 B	(3 B/s : 15%)	[1066]:	+167 B	/	+107 B
=====									
	+978 B	(32 B/s)	/	+703 B	(23 B/s)				

Cumulated WAN IP-TCP + IP-UDP for process

Process Name	Download	(overall %)	/	Upload	(overall %)	Details	Download	/	Upload
Unknown	73.54 MB	(83%)	/	113.90 MB	(97%)	[49577]:	69.33 MB	/	90.29 MB
Monitor.exe	13.82 MB	(16%)	/	2.22 MB	(2%)	pop3:	12.37 MB	/	693.66 kB
era.exe	1.34 MB	(2%)	/	1.25 MB	(1%)	http:	1.31 MB	/	1.22 MB
ageNetSystay.exe	325.67 kB	(0%)	/	30.11 kB	(0%)	http:	325.67 kB	/	30.11 kB
svchost.exe	77.91 kB	(0%)	/	84.48 kB	(0%)	https:	9.43 kB	/	76.83 kB
skrm.exe	33.92 kB	(0%)	/	4.63 kB	(0%)	http:	33.92 kB	/	4.63 kB
=====									
	89.13 MB		/	117.56 MB					

Cumulated WAN IP for IP addr.

IP addr.	Download	(overall %)	/	Upload	(overall %)	Details
192.168.10.142	69.33 MB	(78%)	/	90.29 MB	(77%)	[49577]:
192.168.10.162 (HB45706A)	4.21 MB	(5%)	/	23.65 MB	(20%)	[1066]:

Image: Odoslané a prijaté dáta pre TCP a UDP pakety

The fourth part shows cumulative amount of transferred data, distinguishing IP for the whole day from 00:00 till 24:00. It also shows average speeds of Upload and Download and transfer ports, and the percentage of the total data transferred.

The fifth part contains information about the whole traffic through virtual and network adapters.

Network Info

Filter

Date Time	Description
2012.12.13 11:44:24.096	Internet Network Info
2012.12.13 11:43:54.091	Internet Network Info
2012.12.13 11:43:24.091	Internet Network Info
2012.12.13 11:42:54.091	Internet Network Info
2012.12.13 11:42:25.175	Internet Network Info
2012.12.13 11:41:54.092	Internet Network Info
2012.12.13 11:41:24.092	Internet Network Info
2012.12.13 11:40:54.092	Internet Network Info
2012.12.13 11:40:24.092	Internet Network Info

[3/13396] 13.12.2012 11:40:24, Compressed, [1910 Bytes / 3817 Bytes], Internet Network Info

Summary Text Test Series

Internet Network Info

89.13 MB / 117.56 MB

IP addr.	Download (overall %)	Upload (overall %)	Details
192.168.10.142	69.33 MB (78%)	90.29 MB (77%)	[49577]:
192.168.10.162 (HB45706A)	4.21 MB (5%)	23.65 MB (20%)	[1066]:
92.240.251.49 (49.251.240.92)	12.08 MB (14%)	677.92 kB (1%)	pop3:
217.67.17.133 (www.vu.sk)	1.41 MB (2%)	1.57 MB (1%)	http:
89.202.149.49 (ua22.eset.com)	1.08 MB (1%)	33.04 kB (0%)	http:
89.202.157.201 (tsm04.eset.com)	32.27 kB (0%)	204.34 kB (0%)	http:
93.184.71.19 (tsm01.eset.com)	28.87 kB (0%)	182.61 kB (0%)	http:
89.202.157.196 (tsm05.eset.com)	26.78 kB (0%)	169.48 kB (0%)	http:
	89.16 MB (99%)	117.60 MB (99%)	

Ethernet Traffic - Physical Adapters:

Incoming Total Traffic 10.81 GB

Outgoing Total Traffic 14.16 GB

Unknown Total Traffic (broadcasts, virtual machines,...) 13.28 MB

WAN Traffic IPs: other than 0.0.0.0; 127.0.0.1; 192.168.0.*

Separately Monitored Traffic IPs: 0.0.0.0; 127.0.0.1

Image: Internetové prenosy rozdelené na IP adresy, sumárny prenos dát cez ethernet

Date:

12/06/2012



[1]



[2]



[3]



[4]

Links

[1] https://customermonitor.eu/sites/default/files/network%20info_1.png

[2] <https://customermonitor.eu/sites/default/files/ast%201%20network%20info.png>

[3] <https://customermonitor.eu/sites/default/files/druha%20cast%20network%20info2.png>

[4] https://customermonitor.eu/sites/default/files/cast%204_0.png