

The main purpose of Watches in the solution Customer Monitor is to track values and states of IT system functions in real time, with notification of limit or erroneous values. Watches have a huge share on the main purpose of CM, which is to early and accurately determine errors, thus ensuring a smooth operation of computer equipment. Exact procedure of setup and description of the individual sections of Watches can be found in the section [Introduction to setup of Online monitoring - Watches](#) [1].

In this section we'll show you, where you can check the states of Watches, directly through C-MonitorConsole, but also through CM Portal, as well as view logs and history of the process of Watches.

View of the current state of Watch through C-Monitor client and CM Portal

States of set-up Watches may be viewed directly in the console, in the item Watches State, in the section C-Monitor Runtime Information, as is displayed on the following image

Description of columns of a Watch's current state:

Name/Short Name - name of the Watch and its abbreviation, a green circle means that the Watch is in state OK, red - Fail, gray - Unknown

Value - values that are evaluated by the Watch

State Evaluated - date and time of when the current state of the Watch was evaluated

Last State Change - the last change of the Watch's state

State Description - conditions to determine the state, which are evaluated along with the currently taken values

| Name/Short Name | Value | State Evaluated | Last State Change | State Description |
|-----------------------|---|------------------------------|------------------------------|---|
| monitoring W1 | CPU Core #0 = 53 °C CPU Core #1 = 54 °C HDD ST950042 0A5 = 36 °C HDD ST950042 0A5 = 36 °C Current Voltage = 12.89 V | 5. Dec 2012 Wed. 15:43:41 | 4. Dec 2012 Tue. 8:21:43 | OK - because all conditions are true • TRUE - Hw Mon.: CPU Core #0 (53 °C) < 75 °C (5. 12. 2012 15:43:39) • TRUE - Hw Mon.: CPU Core #1 (54 °C) < 75 °C (5. 12. 2012 15:43:39) • TRUE - Hw Mon.: HDD ST950042 0A5 (36 °C) < 55 °C (5. 12. 2012 15:43:39) • TRUE - Hw Mon.: HDD ST950042 0A5 (36 °C) < 55 °C (5. 12. 2012 15:43:39) • TRUE - Hw Mon.: Current Voltage (12.09 V) IN <11.650;12.880> V (5. 12. 2012 15:43:39) |
| Miesto na disku W2 | Free Space C:\ = 67.85 GB | 5. Dec 2012 Wed. 15:43:41 | 5. Dec 2012 Wed. 15:39:41 | OK - because all conditions are true • TRUE - Free Space on "C:\": 67.85 GB) > 10 GB |
| aktivita disku W3 | Disk Activity = 7% | 5. Dec 2012 Wed. 15:43:41 | 5. Dec 2012 Wed. 15:40:41 | OK - because all conditions are true • TRUE - Disk Activity "" (7%) < 90% |
| CPU usage W4 | CPU System = 0% | 5. Dec 2012 Wed. 15:43:41 | 5. Dec 2012 Wed. 15:39:41 | OK - because all conditions are true • TRUE - CPU Usage "System" (0%) < 90% |
| MEMORY USAGE W5 | Used Phys. M.S. = 2.61 GB | 5. Dec 2012 Wed. 15:43:41 | 5. Dec 2012 Wed. 15:43:41 | FAIL - because at least one condition is false • FALSE - Memory Usage "Used Phys. M.S." (2.61 GB) < 2500 MB |

Name/Short Name: monitoring
Short Name: W1

Values:
CPU Core #0 = 53 °C
CPU Core #1 = 54 °C
HDD ST950042 0A5 = 36 °C
HDD ST950042 0A5 = 36 °C
Current Voltage = 12.89 V

State Description:
OK - because all conditions are true
• TRUE - Hw Mon.: CPU Core #0 (53 °C) < 75 °C (5. 12. 2012 15:43:39)
• TRUE - Hw Mon.: CPU Core #1 (54 °C) < 75 °C (5. 12. 2012 15:43:39)
• TRUE - Hw Mon.: HDD ST950042 0A5 (36 °C) < 55 °C (5. 12. 2012 15:43:39)
• TRUE - Hw Mon.: HDD ST950042 0A5 (36 °C) < 55 °C (5. 12. 2012 15:43:39)
• TRUE - Hw Mon.: Current Voltage (12.09 V) IN <11.650;12.880> V (5. 12. 2012 15:43:39)

Evaluated at: Wed. 5. Dec 2012, 15:43:41
State Changed at: Tue. 4. Dec 2012, 8:21:43

Image: Zobrazenie stavu watchu

Information are transferred to CM portal with a few second delay, so you can also use the interface of CM portal to check states. States of Watches can be found at *Presentation and Evaluation -> Presentation -> Watches(Online monitoring)* -> search for a concrete Watch through the upper filter, as displayed on the next image. By pressing the button *Edit*, you can change evaluation parameters

etc. By clicking on the Watch's Name, you'll get a view of the Watch's process history in a table or graphic form.

| Stav | Meno | Hodnota | Posledná zmena stavu | Podmienky k určeniu stavu | CM-ID počítača | SRIDM počítača | Umiestnenie | online spojenie s CM | |
|-------------------|------|--|----------------------|---|----------------|----------------|-------------|----------------------|--------------------------|
| ● monitoring | | CPU Core #0 47 °C±2 °C CPU Core #1 48 °C±2 °C HDD ST950042 SAS 27 °C±2 °C HDD ST950042 SAS 27 °C±2 °C Current Voltage 12.09 Vs8.100 V | 5. Dec 2012 14:25:47 | OK - because all conditions are true ● TRUE - Hw.Mem.: CPU Core #0 (47 °C) < 75 °C (6. 12. 2012 8:25:53) ● TRUE - Hw.Mem.: CPU Core #1 (48 °C) < 75 °C (6. 12. 2012 8:25:53) ● TRUE - Hw.Mem.: HDD ST950042 SAS (28 °C) < 55 °C (6. 12. 2012 8:25:53) ● TRUE - Hw.Mem.: HDD ST950042 SAS (28 °C) < 55 °C (6. 12. 2012 8:25:53) ● TRUE - Hw.Mem.: Current Voltage (12.09 V) IN <11.650; 12.690> V (6. 12. 2012 8:25:53) | SEANB08 | JURAJ-HP | Topolova 4, | 6. Dec 2012 08:25:55 | Editovať |
| ● Miesto na disku | | Free Space C:\ 67.79 GB±1 GB | 5. Dec 2012 15:39:42 | OK - because all conditions are true ● TRUE - Free Space on "C:" (67.79 GB) > 12 GB | SEANB08 | JURAJ-HP | Topolova 4, | 6. Dec 2012 08:25:55 | Editovať |
| ● aktivita disku | | Disk Activity 74%±5 | 6. Dec 2012 08:25:54 | OK - because all conditions are true ● TRUE - Disk Activity™ (74%) < 96% | SEANB08 | JURAJ-HP | Topolova 4, | 6. Dec 2012 08:25:55 | Editovať |

Image: Zobrazenie stavu watchu na CM portáli

Current Log from Watches viewed via C-Monitor client

View of the current log from watches through C-Monitor client in MonitorConsole. Watches Current Log is displayed on the next image and it captures every change of the Watch's state.

Description of columns of a Watch's current state:

Date Time - ddate and time of when the change of the Watch's state occurred

State change - captures changes of Watches' states

Name/Short Name - name of the Watch and its abbreviation, a green circle means that the Watch is in state OK, red - Fail, gray - Unknown

Value - values that are evaluated by the Watch

State Description - conditions to determine the state, which are evaluated along with the currently taken values

| Date Time | State Change | Name / Short Name | Value | State Description |
|------------------------------|--------------|-------------------|---|--|
| 4. Dec 2012 Tue, 8:16:13 | monitoring | w1 | CPU Core #0 = 68 °C CPU Core #1 = 69 °C HDD ST950042 0A5 = 35 °C HDD ST950042 0A5 = 35 °C Current Voltage = 12.09 V | FAIL - because at least one condition is false ● FALSE - Hvi.Mon.: CPU Core #0 (68 °C) < 68 °C (4. 12. 2012 8:16:03) ● FALSE - Hvi.Mon.: CPU Core #1 (69 °C) < 68 °C (4. 12. 2012 8:16:03) ● TRUE - Hvi.Mon.: HDD ST950042 0A5 (35 °C) < 55 °C (4. 12. 2012 8:16:03) ● TRUE - Hvi.Mon.: HDD ST950042 0A5 (35 °C) < 55 °C (4. 12. 2012 8:16:03) ● TRUE - Hvi.Mon.: Current Voltage (12.09 V) IN < 11.650;12.880> V (4. 12. 2012 8:16:03) |
| 4. Dec 2012 Tue, 8:16:43 | monitoring | w1 | CPU Core #0 = 61 °C CPU Core #1 = 63 °C HDD ST950042 0A5 = 35 °C HDD ST950042 0A5 = 35 °C Current Voltage = 12.09 V | OK - because all conditions are true ● TRUE - Hvi.Mon.: CPU Core #0 (61 °C) < 68 °C (4. 12. 2012 8:16:33) ● TRUE - Hvi.Mon.: CPU Core #1 (63 °C) < 68 °C (4. 12. 2012 8:16:33) ● TRUE - Hvi.Mon.: HDD ST950042 0A5 (35 °C) < 55 °C (4. 12. 2012 8:16:33) ● TRUE - Hvi.Mon.: HDD ST950042 0A5 (35 °C) < 55 °C (4. 12. 2012 8:16:33) ● TRUE - Hvi.Mon.: Current Voltage (12.09 V) IN < 11.650;12.880> V (4. 12. 2012 8:16:33) |
| 4. Dec 2012 Tue, 8:21:43 | monitoring | w1 | CPU Core #0 = 55 °C CPU Core #1 = 56 °C HDD ST950042 0A5 = 36 °C HDD ST950042 0A5 = 36 °C Current Voltage = 12.09 V | OK - because all conditions are true ● TRUE - Hvi.Mon.: CPU Core #0 (55 °C) < 75 °C (4. 12. 2012 8:21:33) ● TRUE - Hvi.Mon.: CPU Core #1 (56 °C) < 75 °C (4. 12. 2012 8:21:33) ● TRUE - Hvi.Mon.: HDD ST950042 0A5 (36 °C) < 55 °C (4. 12. 2012 8:21:33) ● TRUE - Hvi.Mon.: HDD ST950042 0A5 (36 °C) < 55 °C (4. 12. 2012 8:21:33) ● TRUE - Hvi.Mon.: Current Voltage (12.09 V) IN < 11.650;12.880> V (4. 12. 2012 8:21:33) |
| 5. Dec 2012 Wed, 15:38:11 | monitoring | w2 | Free Space C:\ = 67.78 GB | FAIL - because at least one condition is false ● FALSE - Free Space on "C:\\" (67.78 GB) > 10 GB |
| 5. Dec 2012 Wed, 15:38:11 | monitoring | w3 | Disk Activity = 3% | OK - because all conditions are true ● TRUE - Disk Activity "" (3%) < 80% |
| 5. Dec 2012 Wed, 15:38:11 | monitoring | w4 | CPU Systems = 11% | FAIL - because at least one condition is false ● FALSE - CPU Usage "System" (11%) > 80% |
| 5. Dec 2012 Wed, 15:39:41 | monitoring | w2 | Free Space C:\ = 67.79 GB | OK - because all conditions are true ● TRUE - Free Space on "C:\\" (67.79 GB) > 10 GB |
| 5. Dec 2012 Wed, 15:39:41 | monitoring | w3 | Disk Activity = 100% | FAIL - because at least one condition is false ● FALSE - Disk Activity "" (100%) < 80% |
| 5. Dec 2012 Wed, 15:39:41 | monitoring | w4 | CPU Systems = 1% | OK - because all conditions are true ● TRUE - CPU Usage "System" (1%) < 80% |
| 5. Dec 2012 Wed, 15:40:11 | monitoring | w3 | Disk Activity = 100% | FAIL - because at least one condition is false ● FALSE - Disk Activity "" (100%) < 50% |

Image: Zobrazenie aktuálneho logu z watches

To view older logs, go to the section Watches History, as it's shown on the next image

| Date Time | Description | State Description |
|--------------------------|-------------|-------------------|
| 2012.12.04. 00:19:20.850 | Watches Log | |
| 2012.12.02. 23:18:21.898 | Watches Log | |
| 2012.11.30. 09:08:44.147 | Watches Log | |
| 2012.11.29. 16:32:39.979 | Watches Log | |
| 2012.11.27. 07:34:07.093 | Watches Log | |
| 2012.10.19. 09:04:26.676 | Watches Log | |
| 2012.10.16. 14:33:19.625 | Watches Log | |
| 2012.10.08. 08:48:18.536 | Watches Log | |
| 2012.09.05. 09:36:28.975 | Watches Log | |
| 2012.09.01. 19:04:45.652 | Watches Log | |
| 2012.08.31. 09:42:18.800 | Watches Log | |

| Date Time | State Change | Name / Short Name | Value | State Description |
|------------------------------|--------------|-------------------|---|--|
| 2. Dec 2012 Sun, 23:23:27 | monitoring | w1 | CPU Core #0 = 50 °C CPU Core #1 = 53 °C HDD ST950042 0A5 = 29 °C HDD ST950042 0A5 = 29 °C Current Voltage = 12.48 V | OK - because all conditions are true ● TRUE - Hvi.Mon.: CPU Core #0 (50 °C) < 68 °C (2. 12. 2012 23:23:17) ● TRUE - Hvi.Mon.: CPU Core #1 (53 °C) < 68 °C (2. 12. 2012 23:23:17) ● TRUE - Hvi.Mon.: HDD ST950042 0A5 (29 °C) < 55 °C (2. 12. 2012 23:23:17) ● TRUE - Hvi.Mon.: HDD ST950042 0A5 (29 °C) < 55 °C (2. 12. 2012 23:23:17) ● TRUE - Hvi.Mon.: Current Voltage (12.48 V) IN < 11.650;12.880> V (2. 12. 2012 23:23:27) |
| 3. Dec 2012 Mon, 15:23:24 | monitoring | w1 | CPU Core #0 = 67 °C CPU Core #1 = 68 °C HDD ST950042 0A5 = 40 °C HDD ST950042 0A5 = 40 °C Current Voltage = 12.48 V | FAIL - because at least one condition is false ● TRUE - Hvi.Mon.: CPU Core #0 (67 °C) < 68 °C (3. 12. 2012 15:23:15) ● FALSE - Hvi.Mon.: CPU Core #1 (68 °C) < 68 °C (3. 12. 2012 15:23:15) ● TRUE - Hvi.Mon.: HDD ST950042 0A5 (40 °C) < 55 °C (3. 12. 2012 15:23:15) ● TRUE - Hvi.Mon.: HDD ST950042 0A5 (40 °C) < 55 °C (3. 12. 2012 15:23:15) ● TRUE - Hvi.Mon.: Current Voltage (12.48 V) IN < 11.650;12.880> V (3. 12. 2012 15:23:24) |
| 3. Dec 2012 Mon, 15:24:24 | monitoring | w1 | CPU Core #0 = 63 °C CPU Core #1 = 62 °C HDD ST950042 0A5 = 40 °C HDD ST950042 0A5 = 40 °C Current Voltage = 12.48 V | OK - because all conditions are true ● TRUE - Hvi.Mon.: CPU Core #0 (63 °C) < 68 °C (3. 12. 2012 15:24:15) ● TRUE - Hvi.Mon.: CPU Core #1 (62 °C) < 68 °C (3. 12. 2012 15:24:15) ● TRUE - Hvi.Mon.: HDD ST950042 0A5 (40 °C) < 55 °C (3. 12. 2012 15:24:15) ● TRUE - Hvi.Mon.: HDD ST950042 0A5 (40 °C) < 55 °C (3. 12. 2012 15:24:15) ● TRUE - Hvi.Mon.: Current Voltage (12.48 V) IN < 11.650;12.880> V (3. 12. 2012 15:24:24) |

Image: Zobrazenie histórie stavov watches

Current Log from Watches viewed via CM portal

Log from watches can be viewed on CM portal in the section *Presentation and Evaluation* -> *Watches (Online Monitoring)* -> select a concrete watch through the upper filter and click on its name, as

displayed on the following image.



Image: Vstup do zobrazenie Logu z Watchu

In the next window, choose the time period for which you want the log from the Watch's process to be displayed. In case there's more Watches for the same device, select one whose history you want to view, and press the button *Show*. By clicking on the button *Show graph*, you'll also see the Watch's course history as a graph.

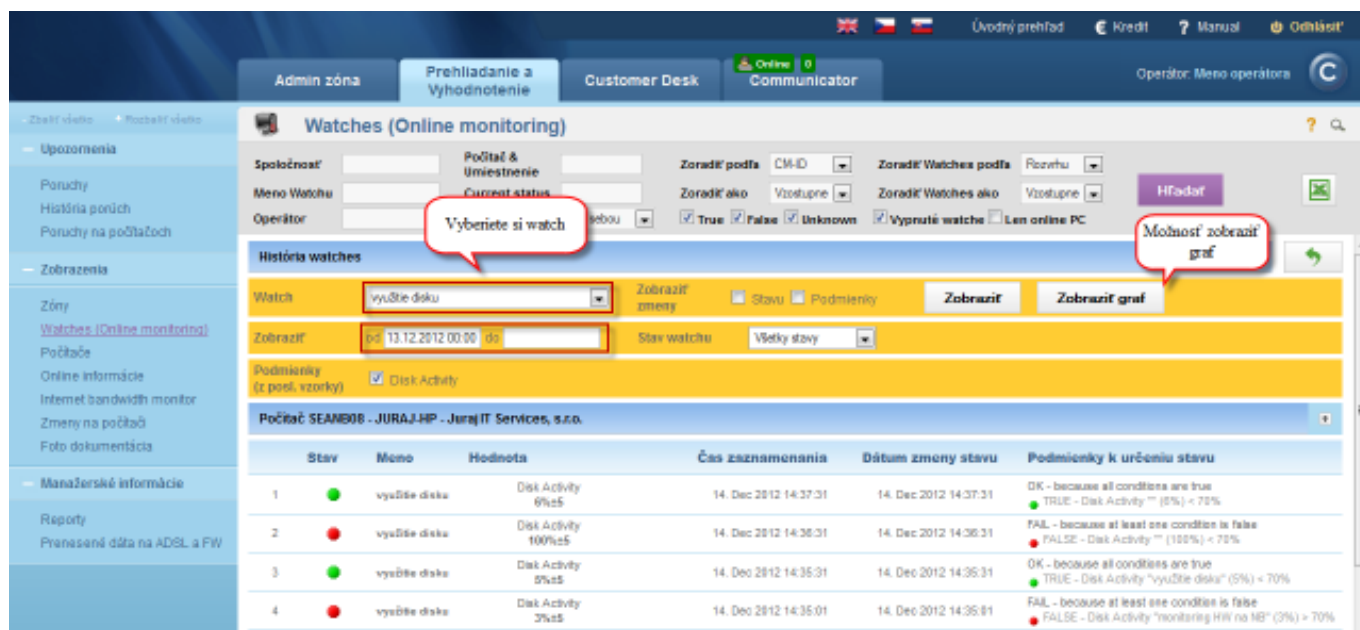


Image: Log z Watches

Date:

10/28/2012



[2]



[3]



[4]



[5]



Links

[1] <https://customermonitor.eu/how-cm-works-0/monitoring-and-diagnostics/introduction-setup-online-monitoring-watches>

[2] <https://customermonitor.eu/sites/default/files/watch%20state%202.png>

[3] <https://customermonitor.eu/sites/default/files/watches%20stavy.png>

[4] <https://customermonitor.eu/sites/default/files/watches%20current%20log.png>

[5] https://customermonitor.eu/sites/default/files/watches%20history_0.png

[6] <https://customermonitor.eu/sites/default/files/zobrazenie%20historie%20watchu.png>

[7] <https://customermonitor.eu/sites/default/files/cmonitor%20watch%20current%20log.png>